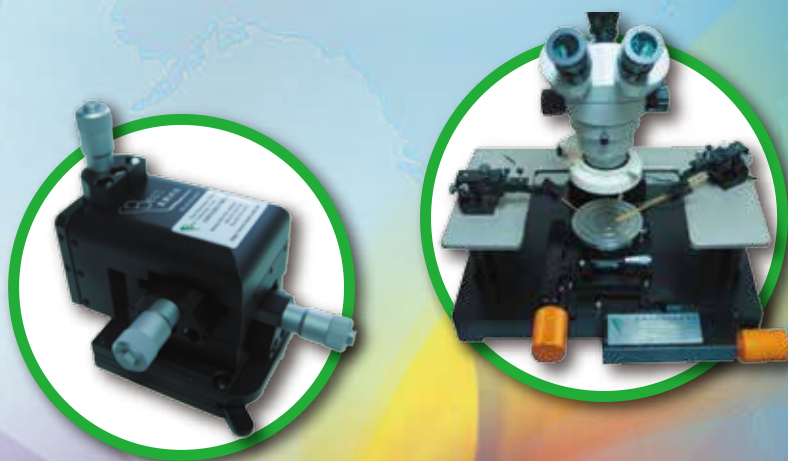




貝斯科技股份有限公司

Best Electronics Service Technology Corp



產品型錄

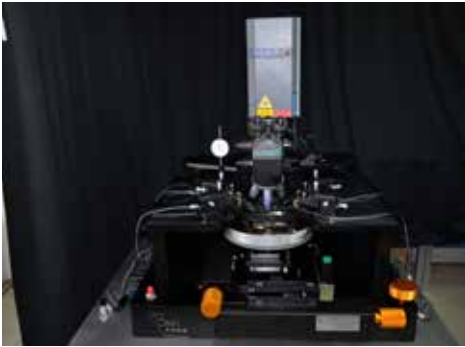


產品索引 Contents

1. Probe Station 探針台 (4" - 6" - 8" - 12")	01
2. Micropositioner 探針座	03
3. Tip Holder 針桿 (Triaxial-Coaxial)	05
4. Cable Assembly 連接線 (Triaxial-Coaxial)	07
5. GGB Tungsten Probe Tips.....	16
6. GGB RF Probes 高頻探針 (40GHz ~ 500GHz).....	17
7. GGB Picoprobe 主動式探針 & Arm(12C-18C-19C-28C-29C-34A-35).....	19
8. Calibration Substrate(校正片)	21
9. Triaxial Adapter 轉接頭	23
10. Coaxial Adapter 轉接頭	24
11. Microscope 顯微鏡 (Mitutoyo-Motic- 立體顯微鏡)	26
12. CCD 影像擷取系統 (Sony-Sentech-Watec).....	28
13. MEDO 超靜音真空幫浦.....	28
14. Shielding Box 黑箱 & 防震桌 & Hot Chuck	29
15. PCB Layout PCB Manufacturing PCB Assembly Service	30
16. 各式烤箱銷售 (Oven)Assembly Service	31
17. 各式助焊劑油汙 - 冷卻劑銷售 (MicroCare 台灣總代理).....	32
18. 各式 socket / socket adaptor 銷售	33
19. 各式電子零件售銷服務	33

1. Probe Station 探針台 (4" - 6" - 8" - 12")

產品編號 :BPW-1200



Specification:

BPW-1200 12" Probe Station 探針台

- 12" wafer stainless vacuum chuck(hot chuck)
- Vacuum on-off switch to control each vacuum ring
- Chuck X-Y stage distance 12"x12"
- Chuck theta rotation manual , Platen quick up-down
- Platen up-down 25mm 解析 10 μ m , Microscope mount x-y travel 2"x2"
- Microscope Z 軸氣動快速升降 for easy loading/unloading sample
- X-Y Stage 氣動快速移動及微調線性移動 , Heavy and stable bench base
- Upgrade:CCD ,Laser System,Hot Chuck, 防震桌 ,Shielding Box

產品編號 :BPW-800



Specification:

BPW-800 8" Probe Station 探針台

- 8" Wafer stainless vacuum chuck
- Vacuum on-off switch to control each vacuum ring(獨立控制)
- Chuck X-Y stage distance 8" x8" (203.2mmx203.2mm)
- Chuck theta rotation 0° ~ 360° manual
- Platen up-down distance 20 mm
- Platen quick up-down travel 6 mm
- Fast pull-out Y stage for easy loading/unloading sample
- Microscope mount x-y travel 2" x2" (50.8mmx50.8mm)

產品編號 :BPW-600

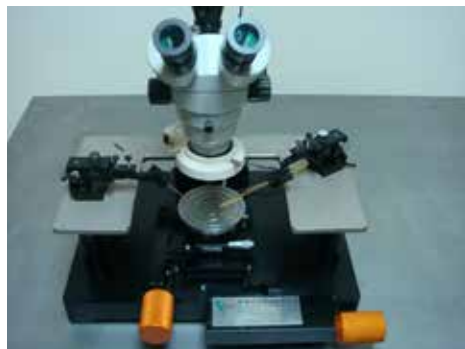


Specification:

BPW-600 6" Probe Station 探針台

- 6" Wafer stainless vacuum chuck
- Vacuum on-off switch to control each vacuum ring(獨立控制)
- Chuck X-Y stage distance 6"x6"(152.4mmx152.4mm)
- Chuck theta rotation 0° ~ 360° manual
- Platen up-down distance 20 mm
- Platen quick up-down travel 6 mm
- Fast pull-out Y stage for easy loading/unloading sample
- Microscope mount x-y travel 2"x2"(50.8mmx50.8mm)

產品編號 :BPE-600

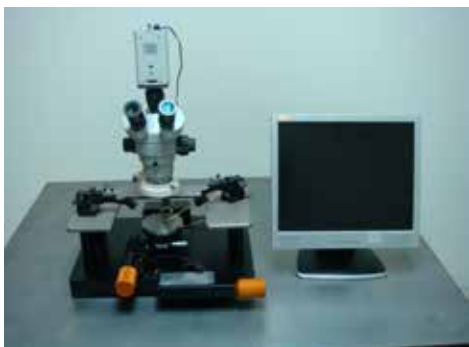


Specification:

BPE-600 6" Probe Station 探針台

- 6" wafer stainless vacuum chuck
- chuck x-y stage 行程 :101.6mmx101.6mm(4"x4")
- chuck theta rotation 0° ~ 360° manual 微調
- Platen U 型固定不動
- chuck x-y stage 最小移動距離 2 μ m
- chuck 面積 6 " 平整度 :5 μ m
- Box 底座尺寸 (450mm 長 x320mm 寬 x50mm 高)

產品編號 :BPE-400



Specification:

BPE-400 4" Probe Station 探針台

- 4" wafer stainless vacuum chuck
- chuck x-y stage 行程 :101.6mmx101.6mm(4" x4")
- Chuck theta rotation 0° ~ 360° manual 微調
- Platen U 型固定不動
- chuck x-y stage 最小移動距離 2μm
- chuck 面積 4" 平整度 :5μm
- Box 底座尺寸 (450mm 長 x320mm 寬 x50mm 高)

產品編號 :BPN-600



Specification:

BPN-600 6" Probe Station 探針台

- 6" wafer stainless vacuum chuck
- Chuck x-y stage 行程 :50.8mmx50.8mm(2" x2")
- Chuck theta rotation 0° ~ 360° manual 微調
- Platen U 型固定不動
- Chuck x-y stage 最小移動距離 3μm
- Chuck 面積 4" 平整度 :5μm
- Box 底座尺寸 (450mm 長 x320mm 寬 x50mm 高)

產品編號 :BPN-400



Specification:

BPN-400 4" Probe Station 探針台

- 4" wafer stainless vacuum chuck
- Chuck x-y stage 行程 :50.8mmx50.8mm(2" x2")
- Chuck theta rotation 0° ~ 360° manual 微調
- Platen U 型固定不動
- Chuck x-y stage 最小移動距離 3μm
- Chuck 面積 4" 平整度 :5μm
- Box 底座尺寸 (450mm 長 x320mm 寬 x50mm 高)

產品編號 :BPL-4030



Specification:

BPL-4030 LCD Probe Station 探針台

- LCD Manual ProbeStation
- Stage 固定不動, 龍門移動式
- 日光燈或 LED 背光系統 (照度值 : ≥ 10000Lux)
- Off-Line, Pannl 以手動取放片 , Manual control
- 防震系統 : 主動式防震氣囊
- 高低溫加熱系統 (-40°C ~ 300°C)
- 採用 Mitutoyo 光學顯微鏡

2. Micropositioner 探針座

Specification: Resolution 0.7 μm (100 TPI)

產品編號 :BT-60

BT-60 探針座

- X-Y-Z 行程 : 12x12x12 mm linear movement
- Linear movement resolution: 0.7 μm (100 TPI)
- Dimension: 112x86x108 mm (W x D x H)
- 底座 : 磁性反轉底座 or 真空底座
- 磁性反轉專利證號 :M306330 Weight:650 g
- 搭配直立仰角機構



產品編號 :RF-60

RF-60 高頻探針座

- X-Y-Z 行程 : 12x12x12 mm linear movement
- Linear movement resolution: 0.7 μm (100 TPI)
- Dimension: 112x86x108 mm (W x D x H)
- 底座 : 磁性反轉底座 or 真空底座
- 磁性反轉專利證號 :M306330 Weight:650 g
- 搭配 RF 高頻探針 (GS SG GSG)



產品編號 :BL-60

BL-60 L 型探針座

- X-Y-Z 行程 : 12x12x12 mm linear movement
- Linear movement resolution: 0.7 μm (100 TPI)
- Dimension: 112x86x108 mm (W x D x H)
- 底座 : 磁性反轉底座 or 真空底座
- 磁性反轉專利證號 :M306330 Weight:650 g
- 搭配 L 型探針桿 (Spring type 彈簧夾針)



產品編號 :BB-60

BB-60 大型仰角機構 - 探針座

- X-Y-Z 行程 : 12x12x12 mm linear movement
- Linear movement resolution: 0.7 μm (100 TPI)
- Dimension: 112x86x108 mm (W x D x H)
- 底座 : 磁性反轉底座 or 真空底座
- 磁性反轉專利證號 :M306330 Weight:650 g
- 搭配大型仰角機構



產品編號 :PP-60

PP-60 主動式探針座

- X-Y-Z 行程 : 12x12x12 mm linear movement
- Linear movement resolution: 0.7 μm (100 TPI)
- Dimension: 112x86x108 mm (W x D x H)
- 底座 : 磁性反轉底座 or 真空底座
- 磁性反轉專利證號 :M306330 Weight:650 g
- 搭配主動式探針 (Picoprobe)



產品編號 :BT-80

BT-80 探針座

- X-Y-Z 行程 : 12x12x12 mm linear movement
- Linear movement resolution: 0.7 μm (100 TPI)
- Dimension: 100x72x95 mm (W x D x H)
- 底座 : 磁性反轉底座 or 真空底座
- 磁性反轉專利證號 :M306330 Weight:680 g
- 搭配直立仰角機構



產品編號 :RF-80

RF-80 高頻探針座

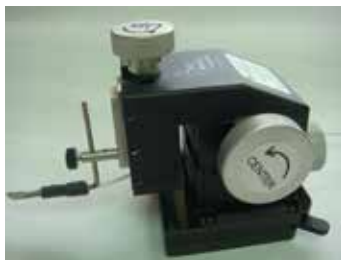
- X-Y-Z 行程 : 12x12x12 mm linear movement
- Linear movement resolution: 0.7 μ m (100 TPI)
- Dimension: 100x72x95 mm (W x D x H)
- 底座 : 磁性反轉底座 or 真空底座
- 磁性反轉專利證號 :M306330 Weight:680 g
- 搭配 RF 高頻探針 (GS SG GSG)



產品編號 :BL-80

BL-80 L 型探針座

- X-Y-Z 行程 : 12x12x12 mm linear movement
- Linear movement resolution: 0.7 μ m (100 TPI)
- Dimension: 100x72x95 mm (W x D x H)
- 底座 : 磁性反轉底座 or 真空底座
- 磁性反轉專利證號 :M306330 Weight:680 g
- 搭配一般 DC 探針



產品編號 :BB-80

BB-80 大型仰角機構 - 探針座

- X-Y-Z 行程 : 12x12x12 mm linear movement
- Linear movement resolution: 0.7 μ m (100 TPI)
- Dimension: 100x72x95 mm (W x D x H)
- 底座 : 磁性反轉底座 or 真空底座
- 磁性反轉專利證號 :M306330 Weight:680 g
- 搭配大型仰角機構



產品編號 :PP-80

PP-80 主動式探針座

- X-Y-Z 行程 : 12x12x12 mm linear movement
- Linear movement resolution: 0.7 μ m (100 TPI)
- Dimension: 100x72x95 mm (W x D x H)
- 底座 : 磁性反轉底座 or 真空底座
- 磁性反轉專利證號 :M306330 Weight:680 g
- 搭配主動式探針 (Picoprobe)



Specification: Resolution 2.0 μ m (50 TPI)

產品編號 :BT-100

BT-100 探針座

- X-Y-Z 行程 : 12x12x12 mm linear movement
- Linear movement resolution: 2.0 μ m (50 TPI)
- Dimension: 73x48x68 mm (W x D x H)
- 底座 : 磁性反轉底座 or 真空底座, Weight: 200 g
- 磁性反轉專利證號 :M306330 ; 搭配直立仰角機構



產品編號 :BL-100

BL-100 L 型仰角 - 探針座

- X-Y-Z 行程 : 12x12x12 mm linear movement
- Linear movement resolution: 2.0 μ m (50 TPI)
- Dimension: 73x48x68 mm (W x D x H)
- 底座 : 磁性反轉底座 or 真空底座, Weight: 200 g
- 磁性反轉專利證號 :M306330 ; 搭配 L 型仰角機構



3. Tip Holder 針桿 (Triaxial-Coaxial)

3-1.Triaxial tip holder(Specification: $\leq 100\text{fA}$ Leakage Performance)

產品編號 :TTT-210

Triaxial tip holder(銅管 Tubular type) 探針桿

- Triaxial cable 2.1m ,connect triaxial (male)
- Less than 100fA Leakage Performance
- Max Voltage: 1000V Maximum current: 10A
- Impedance:50 Ohm 銅管 Tubular type



產品編號 :TTS-210

Triaxial tip holder (Spring type) 探針桿

- Triaxial cable 2.1m ,connect triaxial (male)
- Less than 100fA Leakage Performance
- Max Voltage: 1000V Maximum current: 10A
- Impedance:50 Ohm 彈簧 Spring Type



產品編號 :TTL-210

Triaxial tip holder (Spring L type) 探針桿

- Triaxial cable 2.1m ,connect triaxial (male)
- Less than 100fA Leakage Performance
- Max Voltage: 1000V Maximum current: 10A
- Impedance:50 Ohm 彈簧 Spring L Type



產品編號 :TTB-210

Triaxial tip holder(銅管 Tubular type) 探針桿

- Triaxial cable 2.1m ,connect Banana(male)
- Less than 100fA Leakage Performance
- Max Voltage: 1000V Maximum current: 10A
- Impedance:50 Ohm 銅管 Tubular type



3-2.Coaxial tip holder(Specification: ≤ 10 PA Leakage Performance)

產品編號 :CTT-150

Coaxial tip holder (銅管 Tubular type) 探針桿

- IMPEDANCE:50 OHMS 接頭 : BNC 公
- Less than 10 PA Leakage Performance
- 線徑 :30AWG Max Voltage: 700V
- 銅管 Tubular type 長度 :1.5 m



產品編號 :CTS-150

Coaxial tip holder (Spring type) 探針桿

- IMPEDANCE:50 OHMS 接頭 : BNC 公
- Less than 10 PA Leakage Performance
- 線徑 :30AWG Max Voltage: 700V
- 彈簧 Spring Type 長度 :1.5 m



產品編號 :CTL-150

Coaxial tip holder (Spring L 型 type) 探針桿

- IMPEDANCE:50 OHMS 接頭 : BNC 公
- Less than 10 PA Leakage Performance
- 線徑 :30AWG Max Voltage: 700V
- 彈簧 Spring L Type 長度 :1.5 m



產品編號 :CTT-250

Coaxial tip holder(銅管 Tubular type) 探針桿

- IMPEDANCE:50 OHMS 接頭 : Banana 公
- Less than 10 PA Leakage Performance
- 線徑 :30AWG Max Voltage: 700V
- 銅管 Tubular type 長度 :1.5 m



產品編號 :CTS-350

Coaxial tip holder (Spring type) 探針桿

- IMPEDANCE:50 OHMS 接頭 : Banana 公
- Less than 10 PA Leakage Performance
- 線徑 :30AWG Max Voltage: 700V
- 彈簧 Spring Type 長度 :1.5 m



產品編號 :CTS-550

Coaxial tip holder(Spring type)- 探針桿

- IMPEDANCE:50 OHMS 接頭 : 2 BNC 公
- Less than 10 PA Leakage Performance
- 線徑 :30AWG Max Voltage: 700V
- 彈簧 Spring Type 長度 :1.5 m



產品編號 :CTS-650

Coaxial tip holder(Spring type)- 探針桿

- IMPEDANCE:50 OHMS 接頭 : 2 Banana 公
- Less than 10 PA Leakage Performance
- 線徑 :30AWG Max Voltage: 700V
- 彈簧 Spring Type 長度 :1.5 m



產品編號 :CTS-850

Coaxial tip holder(Spring type)- 探針桿

- IMPEDANCE:50 OHMS 接頭 : 鱷魚夾
- Less than 10 PA Leakage Performance
- 線徑 :30AWG Max Voltage: 700V
- 彈簧 Spring Type 長度 :1.5 m



4. Cable Assembly 連接線 (Triaxial-Coaxial)

Cable Assembly Specification:

- Impedance: 50 ± 2 ohm
- Frequency range ≤ 300 MHZ
- Maximum Voltage: 1000 VRMS/2000VOC
- Maximum current ≤ 10 A
- Leakage Performance ≤ 100 fA
- 長度客製化

4-1.Triaxial(公) to □ Cable Assembly 連接線

產品編號 :TC001

Triaxial(公) to Triaxial(公) Cable

- Impedance: 50 ± 2 ohm 最小漏電流 :100fA
- Operating Voltage: 1000 VRMS/2000VOC
- Frequency range 頻寬 :300 MHZ
- Maximum current: 10A 長度客製化



產品編號 :TC002

Triaxial(公) to 裸線 Cable

- Impedance: 50 ± 2 ohm 最小漏電流 :100fA
- Operating Voltage: 1000 VRMS/2000VOC
- Frequency range 頻寬 :300 MHZ
- Maximum current: 10A 長度客製化



產品編號 :TC003

Triaxial 裸線 Cable

- Impedance: 50 ± 2 ohm 最小漏電流 :100fA
- Operating Voltage: 1000 VRMS/2000VOC
- Frequency range 頻寬 :300 MHZ
- Maximum current: 10A 長度客製化



產品編號 :TC004

Triaxial(公) to Triaxial(母) Cable

- Impedance: 50 ± 2 ohm 最小漏電流 :100fA
- Operating Voltage: 1000 VRMS/2000VOC
- Frequency range 頻寬 :300 MHZ
- Maximum current: 10A 長度客製化



產品編號 :TC005(1 杜邦端子母)

產品編號 :TC007(2 杜邦端子母)

產品編號 :TC008(3 杜邦端子母)

Triaxial(公) to 杜邦端子(母) Cable

- Impedance: 50 ± 2 ohm 最小漏電流 :100fA
- Operating Voltage: 1000 VRMS/2000VOC
- Frequency range 頻寬 :300 MHZ
- Maximum current: 10A 長度客製化



產品編號 :TC009(1 Banana 母)

產品編號 :TC010(2 Banana 母)

產品編號 :TC011(3 Banana 母)

Triaxial(公) to Banana(母) Cable

- Impedance: 50 ± 2 ohm 最小漏電流 :100fA
- Operating Voltage: 1000 VRMS/2000VOC
- Frequency range 頻寬 :300 MHZ
- Maximum current: 10A 長度客製化



產品編號 :TC012

產品編號 :TC013

產品編號 :TC014

Triaxial(公) to Banana(公) Cable

- Impedance: 50 ± 2 ohm 最小漏電流 :100fA
- Operating Voltage: 1000 VRMS/2000VOC
- Frequency range 頻寬 :300 MHZ
- Maximum current: 10A 長度客製化



產品編號 :TC015

產品編號 :TC016

產品編號 :TC017

Triaxial(公) to 鱈魚夾 Cable

- Impedance: 50 ± 2 ohm 最小漏電流 :100fA
- Operating Voltage: 1000 VRMS/2000VOC
- Frequency range 頻寬 :300 MHZ
- Maximum current: 10A 長度客製化



產品編號 :TC018

產品編號 :TC019

產品編號 :TC020

Triaxial(公) to 測試勾 Cable

- Impedance: 50 ± 2 ohm 最小漏電流 :100fA
- Operating Voltage: 1000 VRMS/2000VOC
- Frequency range 頻寬 :300 MHZ
- Maximum current: 10A 長度客製化



產品編號 :TC021

Triaxial(公) to BNC(公) Cable

- Impedance: $50 \pm 2 \text{ ohm}$ 最小漏電流 :100fA
- Operating Voltage: 1000 VRMS/2000VOC
- Frequency range 頻寬 :300 MHZ
- Maximum current: 10A 長度客製化



產品編號 :TC022

Triaxial(公) to BNC(母) Cable

- Impedance: $50 \pm 2 \text{ ohm}$ 最小漏電流 :100fA
- Operating Voltage: 1000 VRMS/2000VOC
- Frequency range 頻寬 :300 MHZ
- Maximum current: 10A 長度客製化



產品編號 :TC023

Triaxial(公) to SMA(公) cable

- Impedance: $50 \pm 2 \text{ ohm}$ 最小漏電流 :100fA
- Operating Voltage: 1000 VRMS/2000VOC
- Frequency range 頻寬 :300 MHZ
- Maximum current: 10A 長度客製化



產品編號 :TC024

Triaxial(公) to SMA(母) cable

- Impedance: $50 \pm 2 \text{ ohm}$ 最小漏電流 :100fA
- Operating Voltage: 1000 VRMS/2000VOC
- Frequency range 頻寬 :300 MHZ
- Maximum current: 10A 長度客製化



產品編號 :TC104

Triaxial(公) to Y 端子 Cable

- Impedance: $50 \pm 2 \text{ ohm}$ 最小漏電流 :100fA
- Operating Voltage: 1000 VRMS/2000VOC
- Frequency range 頻寬 :300 MHZ
- Maximum current: 10A 長度客製化



產品編號 :TC105

Triaxial(公) to 杜邦端子 (公) Cable

- Impedance: $50 \pm 2 \text{ ohm}$ 最小漏電流 :100fA
- Operating Voltage: 1000 VRMS/2000VOC
- Frequency range 頻寬 :300 MHZ
- Maximum current: 10A 長度客製化



4-2.Triaxial(母) to □ Cable Assembly 連接線

產品編號 :TC043

Triaxial(母) to 裸線 Cable

- Impedance: $50 \pm 2 \text{ ohm}$ 最小漏電流 :100fA
- Operating Voltage: 1000 VRMS/2000VOC
- Frequency range 頻寬 :300 MHZ
- Maximum current: 10A 長度客製化



產品編號 :TC044

Triaxial(母) to Triaxial(母) Cable

- Impedance: $50 \pm 2 \text{ ohm}$ 最小漏電流 :100fA
- Operating Voltage: 1000 VRMS/2000VOC
- Frequency range 頻寬 :300 MHZ
- Maximum current: 10A 長度客製化



產品編號 :TC103

Triaxial(母) to Triaxial(公) Cable

- Impedance: $50 \pm 2 \text{ ohm}$ 最小漏電流 :100fA
- Operating Voltage: 1000 VRMS/2000VOC
- Frequency range 頻寬 :300 MHZ
- Maximum current: 10A 長度客製化



產品編號 :TC045

產品編號 :TC046

產品編號 :TC047

Triaxial(母) to 杜邦端子 (母) Cable

- Impedance: $50 \pm 2 \text{ ohm}$ 最小漏電流 :100fA
- Operating Voltage: 1000 VRMS/2000VOC
- Frequency range 頻寬 :300 MHZ
- Maximum current: 10A 長度客製化



產品編號 :TC048

產品編號 :TC049

產品編號 :TC050

Triaxial(母) to Banana(母) Cable

- Impedance: $50 \pm 2 \text{ ohm}$ 最小漏電流 :100fA
- Operating Voltage: 1000 VRMS/2000VOC
- Frequency range 頻寬 :300 MHZ
- Maximum current: 10A 長度客製化



產品編號 :TC051(1 Banana)

產品編號 :TC052(2 Banana)

產品編號 :TC053(3 Banana)

Triaxial(母) to Banana(公) Cable

- Impedance: $50 \pm 2 \text{ ohm}$ 最小漏電流 :100fA
- Operating Voltage: 1000 VRMS/2000VOC
- Frequency range 頻寬 :300 MHZ
- Maximum current: 10A 長度客製化



產品編號 :TC054

產品編號 :TC055

產品編號 :TC056

Triaxial(母) to 鱷魚夾 Cable

- Impedance: $50 \pm 2 \text{ ohm}$ 最小漏電流 :100fA
- Operating Voltage: 1000 VRMS/2000VOC
- Frequency range 頻寬 :300 MHZ
- Maximum current: 10A 長度客製化



產品編號 :TC057

產品編號 :TC058

產品編號 :TC059

Triaxial(母) to 測試勾 Cable

- Impedance: $50 \pm 2 \text{ ohm}$ 最小漏電流 :100fA
- Operating Voltage: 1000 VRMS/2000VOC
- Frequency range 頻寬 :300 MHZ
- Maximum current: 10A 長度客製化



產品編號 :TC060

Triaxial(母) to BNC(公) Cable

- Impedance: $50 \pm 2 \text{ ohm}$ 最小漏電流 :100fA
- Operating Voltage: 1000 VRMS/2000VOC
- Frequency range 頻寬 :300 MHZ
- Maximum current: 10A 長度客製化



產品編號 :TC061

Triaxial(母) to BNC(母) Cable

- Impedance: $50 \pm 2 \text{ ohm}$ 最小漏電流 :100fA
- Operating Voltage: 1000 VRMS/2000VOC
- Frequency range 頻寬 :300 MHZ
- Maximum current: 10A 長度客製化



產品編號 :TC062

Triaxial(母) to SMA(公) Cable

- Impedance: $50 \pm 2 \text{ ohm}$ 最小漏電流 :100fA
- Operating Voltage: 1000 VRMS/2000VOC
- Frequency range 頻寬 :300 MHZ
- Maximum current: 10A 長度客製化



產品編號 :TC063

Triaxial(母) to SMA(母) Cable

- Impedance: $50 \pm 2 \text{ ohm}$ 最小漏電流 :100fA
- Operating Voltage: 1000 VRMS/2000VOC
- Frequency range 頻寬 :300 MHZ
- Maximum current: 10A 長度客製化



4-3.Triaxial BNC(公) to □ Cable Assembly 連接線

產品編號 :TC025

Triaxial BNC(公) to 裸線 Cable

- Impedance: $50 \pm 2 \text{ ohm}$ Leakage $\leq 10\text{PA}$
- Operating Voltage: 1000 VRMS/2000VOC
- Frequency range 頻寬 :300 MHZ
- Maximum current: 10A 長度客製化



產品編號 :TC026(1 杜邦端子 母)

產品編號 :TC027(2 杜邦端子 母)

Triaxial BNC(公) to 杜邦端子 (母) Cable

- Impedance: $50 \pm 2 \text{ ohm}$ Leakage $\leq 10\text{PA}$
- Operating Voltage: 1000 VRMS/2000VOC
- Frequency range 頻寬 :300 MHZ
- Maximum current: 10A 長度客製化



產品編號 :TC028(1 Banana 母)

產品編號 :TC029(2 Banana 母)

Triaxial BNC(公) to Banana(母) Cable

- Impedance: $50 \pm 2 \text{ ohm}$ Leakage $\leq 10\text{PA}$
- Operating Voltage: 1000 VRMS/2000VOC
- Frequency range 頻寬 :300 MHZ
- Maximum current: 10A 長度客製化



產品編號 :TC030(1 Banana 公)

產品編號 :TC031(2 Banana 公)

Triaxial BNC(公) to Banana(公) Cable

- Impedance: $50 \pm 2 \text{ ohm}$ Leakage $\leq 10\text{PA}$
- Operating Voltage: 1000 VRMS/2000VOC
- Frequency range 頻寬 :300 MHZ
- Maximum current: 10A 長度客製化



產品編號 :TC032(1 鱷魚夾)

產品編號 :TC033(2 鱷魚夾)

Triaxial BNC(公) to 鱷魚夾 Cable

- Impedance: $50 \pm 2 \text{ ohm}$ Leakage $\leq 10\text{PA}$
- Operating Voltage: 1000 VRMS/2000VOC
- Frequency range 頻寬 :300 MHZ
- Maximum current: 10A 長度客製化



產品編號 :TC034(1 測試勾)

產品編號 :TC035(2 測試勾)

Triaxial BNC(公) to 測試勾 Cable

- Impedance: $50 \pm 2 \text{ ohm}$ Leakage $\leq 10\text{PA}$
- Operating Voltage: 1000 VRMS/2000VOC
- Frequency range 頻寬 :300 MHZ
- Maximum current: 10A 長度客製化



產品編號:TC036

Triaxial BNC(公) to BNC(母) Cable

- Impedance: $50 \pm 2 \text{ ohm}$ Leakage $\leq 10\text{PA}$
- Operating Voltage: 1000 VRMS/2000VOC
- Frequency range 頻寬:300 MHZ
- Maximum current: 10A 長度客製化



產品編號:TC037

Triaxial BNC(公) to BNC(公) Cable

- Impedance: $50 \pm 2 \text{ ohm}$ Leakage $\leq 10\text{PA}$
- Operating Voltage: 1000 VRMS/2000VOC
- Frequency range 頻寬:300 MHZ
- Maximum current: 10A 長度客製化



產品編號:TC038

Triaxial BNC(公) to SMA(公) Cable

- Impedance: $50 \pm 2 \text{ ohm}$ Leakage $\leq 10\text{PA}$
- Operating Voltage: 1000 VRMS/2000VOC
- Frequency range 頻寬:300 MHZ
- Maximum current: 10A 長度客製化



產品編號:TC039

Triaxial BNC(公) to SMA(母) Cable

- Impedance: $50 \pm 2 \text{ ohm}$ Leakage $\leq 10\text{PA}$
- Operating Voltage: 1000 VRMS/2000VOC
- Frequency range 頻寬:300 MHZ
- Maximum current: 10A 長度客製化



產品編號:TC106

Triaxial BNC(公) to Y 端子 Cable

- Impedance: $50 \pm 2 \text{ ohm}$ Leakage $\leq 10\text{PA}$
- Operating Voltage: 1000 VRMS/2000VOC
- Frequency range 頻寬:300 MHZ
- Maximum current: 10A 長度客製化



產品編號:TC107

Triaxial BNC(母) to Y 端子 Cable

- Impedance: $50 \pm 2 \text{ ohm}$ Leakage $\leq 10\text{PA}$
- Operating Voltage: 1000 VRMS/2000VOC
- Frequency range 頻寬:300 MHZ
- Maximum current: 10A 長度客製化



4-4.Triaxial BNC(母) to □ Cable Assembly 連接線

產品編號:TC064

Triaxial BNC(母) to 裸線 Cable

- Impedance: $50 \pm 2 \text{ ohm}$ Leakage $\leq 10\text{PA}$
- Operating Voltage: 1000 VRMS/2000VOC
- Frequency range 頻寬:300 MHZ
- Maximum current: 10A 長度客製化



產品編號:TC065

Triaxial BNC(母) to 杜邦端子(母) Cable

- Impedance: $50 \pm 2 \text{ ohm}$ Leakage $\leq 10\text{PA}$
- Operating Voltage: 1000 VRMS/2000VOC
- Frequency range 頻寬:300 MHZ
- Maximum current: 10A 長度客製化



產品編號:TC066

產品編號:TC067

Triaxial BNC(母) to Banana(母) Cable

- Impedance: $50 \pm 2 \text{ ohm}$ Leakage $\leq 10\text{PA}$
- Operating Voltage: 1000 VRMS/2000VOC
- Frequency range 頻寬:300 MHZ
- Maximum current: 10A 長度客製化



產品編號:TC068(1 Banana 公)

產品編號:TC069(2 Banana 公)

Triaxial BNC(母) to Banana(公) Cable

- Impedance: $50 \pm 2 \text{ ohm}$ Leakage $\leq 10\text{PA}$
- Operating Voltage: 1000 VRMS/2000VOC
- Frequency range 頻寬:300 MHZ
- Maximum current: 10A 長度客製化



產品編號:TC070(1 鱷魚夾)

產品編號:TC071(2 鱷魚夾)

Triaxial BNC(母) to 鱷魚夾 Cable

- Impedance: $50 \pm 2 \text{ ohm}$ Leakage $\leq 10\text{PA}$
- Operating Voltage: 1000 VRMS/2000VOC
- Frequency range 頻寬:300 MHZ
- Maximum current: 10A 長度客製化



產品編號:TC072(1 測試勾)

產品編號:TC073(2 測試勾)

Triaxial BNC(母) to 測試勾 Cable

- Impedance: $50 \pm 2 \text{ ohm}$ Leakage $\leq 10\text{PA}$
- Operating Voltage: 1000 VRMS/2000VOC
- Frequency range 頻寬:300 MHZ
- Maximum current: 10A 長度客製化



產品編號 :TC074

Triaxial BNC(母) to BNC(母) Cable

- Impedance: 50 ± 2 ohm Leakage ≤ 10 PA
- Operating Voltage: 1000 VRMS/2000VOC
- Frequency range 頻寬 :300 MHZ
- Maximum current: 10A 長度客製化



產品編號 :TC076

Triaxial BNC(母) to SMA(公) Cable

- Impedance: 50 ± 2 ohm Leakage ≤ 10 PA
- Operating Voltage: 1000 VRMS/2000VOC
- Frequency range 頻寬 :300 MHZ
- Maximum current: 10A 長度客製化



產品編號 :TC077

Triaxial BNC(母) to SMA(母) Cable

- Impedance: 50 ± 2 ohm Leakage ≤ 10 PA
- Operating Voltage: 1000 VRMS/2000VOC
- Frequency range 頻寬 :300 MHZ
- Maximum current: 10A 長度客製化



產品編號 :TC036

Triaxial BNC(母) to BNC(公) Cable

- Impedance: 50 ± 2 ohm Leakage ≤ 10 PA
- Operating Voltage: 1000 VRMS/2000VOC
- Frequency range 頻寬 :300 MHZ
- Maximum current: 10A 長度客製化



產品編號 :TC078

Triaxial BNC(公) to Y 端子 Cable

- Impedance: 50 ± 2 ohm Leakage ≤ 10 PA
- Operating Voltage: 1000 VRMS/2000VOC
- Frequency range 頻寬 :300 MHZ
- Maximum current: 10A 長度客製化



產品編號 :TC079

Triaxial BNC(母) to Y 端子 Cable

- Impedance: 50 ± 2 ohm Leakage ≤ 10 PA
- Operating Voltage: 1000 VRMS/2000VOC
- Frequency range 頻寬 :300 MHZ
- Maximum current: 10A 長度客製化



4-5.Triaxial SMA(公) to □ Cable Assembly 連接線

產品編號 :TC040

Triaxial SMA(公) to SMA(公) Cable

- Impedance: 50 ± 2 ohm Leakage ≤ 10 PA
- Operating Voltage: 1000 VRMS/2000VOC
- Frequency range 頻寬 :300 MHZ
- Maximum current: 10A 長度客製化



產品編號 :TC041

Triaxial SMA(公) to SMA(母) Cable

- Impedance: 50 ± 2 ohm Leakage ≤ 10 PA
- Operating Voltage: 1000 VRMS/2000VOC
- Frequency range 頻寬 :300 MHZ
- Maximum current: 10A 長度客製化



產品編號 :TC042

Triaxial SMA(母) to SMA(母) Cable

- Impedance: 50 ± 2 ohm Leakage ≤ 10 PA
- Operating Voltage: 1000 VRMS/2000VOC
- Frequency range 頻寬 :300 MHZ
- Maximum current: 10A 長度客製化



產品編號 :TC081

Triaxial SMA(公) to 裸線 Cable

- Impedance: 50 ± 2 ohm Leakage ≤ 10 PA
- Operating Voltage: 1000 VRMS/2000VOC
- Frequency range 頻寬 :300 MHZ
- Maximum current: 10A 長度客製化



產品編號 :TC082(1 杜邦端子 母)

產品編號 :TC083(2 杜邦端子 母)

Triaxial SMA(公) to 杜邦端子 (母) Cable

- Impedance: 50 ± 2 ohm Leakage ≤ 10 PA
- Operating Voltage: 1000 VRMS/2000VOC
- Frequency range 頻寬 :300 MHZ
- Maximum current: 10A 長度客製化



產品編號 :TC084(1 Banana 母)

產品編號 :TC085(2 Banana 母)

Triaxial SMA(公) to Banana(母) Cable

- Impedance: 50 ± 2 ohm Leakage ≤ 10 PA
- Operating Voltage: 1000 VRMS/2000VOC
- Frequency range 頻寬 :300 MHZ
- Maximum current: 10A 長度客製化



產品編號:TC086(1 Banana 公)

產品編號:TC087(2 Banana 公)

Triaxial SMA(公) to Banana(公) Cable

- Impedance: $50 \pm 2 \text{ ohm}$ Leakage $\leq 10\text{PA}$
- Operating Voltage: 1000 VRMS/2000VOC
- Frequency range 頻寬:300 MHZ
- Maximum current: 10A 長度客製化



產品編號:TC088(1 鱷魚夾)

產品編號:TC089(2 鱷魚夾)

Triaxial SMA(公) to 鱷魚夾 Cable

- Impedance: $50 \pm 2 \text{ ohm}$ Leakage $\leq 10\text{PA}$
- Operating Voltage: 1000 VRMS/2000VOC
- Frequency range 頻寬:300 MHZ
- Maximum current: 10A 長度客製化



產品編號:TC090(1 測試勾)

產品編號:TC091(2 測試勾)

Triaxial SMA(公) to 測試勾 Cable

- Impedance: $50 \pm 2 \text{ ohm}$ Leakage $\leq 10\text{PA}$
- Operating Voltage: 1000 VRMS/2000VOC
- Frequency range 頻寬:300 MHZ
- Maximum current: 10A 長度客製化



4-6.Triaxial SMA(母) to □ Cable Assembly 連接線

產品編號:TC092

Triaxial SMA(母) to 裸線 Cable

- Impedance: $50 \pm 2 \text{ ohm}$ Leakage $\leq 10\text{PA}$
- Operating Voltage: 1000 VRMS/2000VOC
- Frequency range 頻寬:300 MHZ
- Maximum current: 10A 長度客製化



產品編號:TC093(1 杜邦端子 母)

產品編號:TC094(2 杜邦端子 母)

Triaxial SMA(母) to 杜邦端子(母) Cable

- Impedance: $50 \pm 2 \text{ ohm}$ Leakage $\leq 10\text{PA}$
- Operating Voltage: 1000 VRMS/2000VOC
- Frequency range 頻寬:300 MHZ
- Maximum current: 10A 長度客製化



產品編號:TC095(1 Banana 母)

產品編號:TC096(2 Banana 母)

Triaxial SMA(母) to Banana(母) Cable

- Impedance: $50 \pm 2 \text{ ohm}$ Leakage $\leq 10\text{PA}$
- Operating Voltage: 1000 VRMS/2000VOC
- Frequency range 頻寬:300 MHZ
- Maximum current: 10A 長度客製化



產品編號:TC097(1 Banana 公)

產品編號:TC098(2 Banana 公)

Triaxial SMA(母) to Banana(公) Cable

- Impedance: $50 \pm 2 \text{ ohm}$ Leakage $\leq 10\text{PA}$
- Operating Voltage: 1000 VRMS/2000VOC
- Frequency range 頻寬:300 MHZ
- Maximum current: 10A 長度客製化



產品編號:TC099(1 鱷魚夾)

產品編號:TC100(2 鱷魚夾)

Triaxial SMA(母) to 鱷魚夾 Cable

- Impedance: $50 \pm 2 \text{ ohm}$ Leakage $\leq 10\text{PA}$
- Operating Voltage: 1000 VRMS/2000VOC
- Frequency range 頻寬:300 MHZ
- Maximum current: 10A 長度客製化



產品編號:TC101(1 測試勾)

產品編號:TC102(2 測試勾)

Triaxial SMA(母) to 測試勾 Cable

- Impedance: $50 \pm 2 \text{ ohm}$ Leakage $\leq 10\text{PA}$
- Operating Voltage: 1000 VRMS/2000VOC
- Frequency range 頻寬:300 MHZ
- Maximum current: 10A 長度客製化



4-7.Coaxial BNC(公) to □ Cable Assembly 連接線

產品編號:CC109

Coaxial 裸線

- Manufacturer:Belden 83265
- Impedance:50 Ohms Max Voltage:700V
- 線徑:30 AWG 最小漏電流:10PA



產品編號:CC110

Coaxial(公) to 裸線 Cable

- 線徑:30 AWG, Max Voltage:700V
- Impedance:50 Ohms, 漏電 $\leq 10\text{PA}$
- 長度客製化



產品編號:CC111

Coaxial(公) to Coaxial(公) Cable

- 線徑:30 AWG, Max Voltage:700V
- Impedance:50 Ohms, 漏電 $\leq 10\text{PA}$
- 長度客製化



產品編號 :CC112

Coaxial(公) to BNC(母) Cable

- 線徑 :30 AWG , Max Voltage:700V
- Impedance:50 Ohms , 漏電≤ 10PA
- 長度客製化



產品編號 :CC113(1 杜邦端子 母)

產品編號 :CC114(2 杜邦端子 母)

Coaxial(公) to 杜邦端子(母) Cable

- 線徑 :30 AWG , Max Voltage:700V
- Impedance:50 Ohms , 漏電≤ 10PA
- 長度客製化



產品編號 :CC115(1 Banana 母)

產品編號 :CC116(2 Banana 母)

Coaxial(公) to Banana(母) Cable

- 線徑 :30 AWG , Max Voltage:700V
- Impedance:50 Ohms , 漏電≤ 10PA
- 長度客製化



產品編號 :CC117(1 Banana 公)

產品編號 :CC118(2 Banana 公)

Coaxial(公) to Banana(公) Cable

- 線徑 :30 AWG , Max Voltage:700V
- Impedance:50 Ohms , 漏電≤ 10PA
- 長度客製化



產品編號 :CC119(1 鱷魚夾)

產品編號 :CC120(2 鱷魚夾)

Coaxial(公) to 鱷魚夾 Cable

- 線徑 :30 AWG , Max Voltage:700V
- Impedance:50 Ohms , 漏電≤ 10PA
- 長度客製化



產品編號 :CC121(1 測試勾)

產品編號 :CC122(2 測試勾)

Coaxial(公) to 測試勾 Cable

- 線徑 :30 AWG , Max Voltage:700V
- Impedance:50 Ohms , 漏電≤ 10PA
- 長度客製化



產品編號 :CC123

Coaxial(公) to SMA(公) Cable

- 線徑 :30 AWG , Max Voltage:700V
- Impedance:50 Ohms , 漏電≤ 10PA
- 長度客製化



產品編號 :CC124

Coaxial(公) to SMA(母) Cable

- 線徑 :30 AWG , Max Voltage:700V
- Impedance:50 Ohms , 漏電≤ 10PA
- 長度客製化



產品編號 :CC155

Coaxial(公) to Y 端子 Cable

- 線徑 :30 AWG , Max Voltage:700V
- Impedance:50 Ohms , 漏電≤ 10PA
- 長度客製化



4-8.Coaxial BNC(母) to □ Cable Assembly 連接線

產品編號 :CC128

Coaxial(母) to 裸線 Cable

- 線徑 :30 AWG , Max Voltage:700V
- Impedance:50 Ohms , 漏電≤ 10PA
- 長度客製化



產品編號 :CC129

Coaxial(母) to Coaxial(母) Cable

- 線徑 :30 AWG , Max Voltage:700V
- Impedance:50 Ohms , 漏電≤ 10PA
- 長度客製化



產品編號 :CC130

Coaxial(母) to BNC(公) Cable

- 線徑 :30 AWG , Max Voltage:700V
- Impedance:50 Ohms , 漏電≤ 10PA
- 長度客製化



產品編號 :CC131(1 杜邦端子 母)
 產品編號 :CC132(2 杜邦端子 母)
Coaxial(母) to 杜邦端子 (母) Cable
 ■線徑 :30 AWG, Max Voltage:700V
 ■ Impedance:50 Ohms, 漏電≤ 10PA
 ■長度客製化



產品編號 :CC133(1 Banana 母)
 產品編號 :CC134(2 Banana 母)
Coaxial(母) to Banana(母) Cable
 ■線徑 :30 AWG, Max Voltage:700V
 ■ Impedance:50 Ohms, 漏電≤ 10PA
 ■長度客製化



產品編號 :CC135(1 Banana 公)
 產品編號 :CC136(2 Banana 公)
Coaxial(母) to Banana(公) Cable
 ■線徑 :30 AWG, Max Voltage:700V
 ■ Impedance:50 Ohms, 漏電≤ 10PA
 ■長度客製化



產品編號 :CC137(1 鱷魚夾)
 產品編號 :CC138(2 鱷魚夾)
Coaxial(母) to 鱷魚夾 Cable
 ■線徑 :30 AWG, Max Voltage:700V
 ■ Impedance:50 Ohms, 漏電≤ 10PA
 ■長度客製化



產品編號 :CC139(1 測試勾)
 產品編號 :CC140(2 測試勾)
Coaxial(母) to 測試勾 Cable
 ■線徑 :30 AWG, Max Voltage:700V
 ■ Impedance:50 Ohms, 漏電≤ 10PA
 ■長度客製化



產品編號 :CC141
Coaxial(母) to SMA(公) Cable
 ■線徑 :30 AWG, Max Voltage:700V
 ■ Impedance:50 Ohms, 漏電≤ 10PA
 ■長度客製化



產品編號 :CC142
Coaxial(母) to SMA(母) Cable
 ■線徑 :30 AWG, Max Voltage:700V
 ■ Impedance:50 Ohms, 漏電≤ 10PA
 ■長度客製化



產品編號 :CC156
Coaxial(母) to Y 端子 Cable
 ■線徑 :30 AWG, Max Voltage:700V
 ■ Impedance:50 Ohms, 漏電≤ 10PA
 ■長度客製化



產品編號 :CC145
Coaxial(鱷魚夾) to (鱷魚夾) Cable
 ■線徑 :30 AWG, Max Voltage:700V
 ■ Impedance:50 Ohms, 漏電≤ 10PA
 ■長度客製化



4-9.Coaxial SMA(公 - 母) to □ Cable Assembly 連接線

產品編號 :CC125
Coaxial SMA(公) to SMA(公) Cable
 ■線徑 :30 AWG, Max Voltage:700V
 ■ Impedance:50 Ohms, 漏電≤ 10PA
 ■長度客製化



產品編號 :CC126
Coaxial SMA(母) to SMA(母) Cable
 ■線徑 :30 AWG, Max Voltage:700V
 ■ Impedance:50 Ohms, 漏電≤ 10PA
 ■長度客製化



產品編號 :CC127
Coaxial SMA(公) to SMA(母) Cable
 ■線徑 :30 AWG, Max Voltage:700V
 ■ Impedance:50 Ohms, 漏電≤ 10PA
 ■長度客製化



產品編號 :CC143

Coaxial SMA(母) to 裸線 Cable

- 線徑 :30 AWG , Max Voltage:700V
- Impedance:50 Ohms , 漏電≤ 10PA
- 長度客製化



產品編號 :CC144

Coaxial SMA(公) to 裸線 Cable

- 線徑 :30 AWG , Max Voltage:700V
- Impedance:50 Ohms , 漏電≤ 10PA
- 長度客製化



產品編號 :CC148

Coaxial SMA(公) to 鱷魚夾 Cable

- 線徑 :30 AWG , Max Voltage:700V
- Impedance:50 Ohms , 漏電≤ 10PA
- 長度客製化



產品編號 :CC149

Coaxial SMA(公) to Banana(公) Cable

- 線徑 :30 AWG , Max Voltage:700V
- Impedance:50 Ohms , 漏電≤ 10PA
- 長度客製化



產品編號 :CC150

Coaxial SMA(公) to Banana(母) Cable

- 線徑 :30 AWG , Max Voltage:700V
- Impedance:50 Ohms , 漏電≤ 10PA
- 長度客製化



產品編號 :CC151

Coaxial SMA(公) to 杜邦端子 (母) Cable

- 線徑 :30 AWG , Max Voltage:700V
- Impedance:50 Ohms , 漏電≤ 10PA
- 長度客製化



產品編號 :CC152

Coaxial SMA(母) to 鱷魚夾 Cable

- 線徑 :30 AWG , Max Voltage:700V
- Impedance:50 Ohms , 漏電≤ 10PA
- 長度客製化



產品編號 :CC153

Coaxial SMA(母) to Banana(公) Cable

- 線徑 :30 AWG , Max Voltage:700V
- Impedance:50 Ohms , 漏電≤ 10PA
- 長度客製化



產品編號 :CC154

Coaxial SMA(母) to Banana(母) Cable

- 線徑 :30 AWG , Max Voltage:700V
- Impedance:50 Ohms , 漏電≤ 10PA
- 長度客製化



產品編號 :CC157

Coaxial SMA(母) to Y 端子 Cable

- 線徑 :30 AWG , Max Voltage:700V
- Impedance:50 Ohms , 漏電≤ 10PA
- 長度客製化



產品編號 :CC146

Coaxial(鱷魚夾) to Banana(公) Cable

- 線徑 :30 AWG , Max Voltage:700V
- Impedance:50 Ohms , 漏電≤ 10PA
- 長度客製化



產品編號 :CC147

Coaxial(鱷魚夾) to Banana(母) Cable

- 線徑 :30 AWG , Max Voltage:700V
- Impedance:50 Ohms , 漏電≤ 10PA
- 長度客製化



5. GGB Tungsten Probe Tips

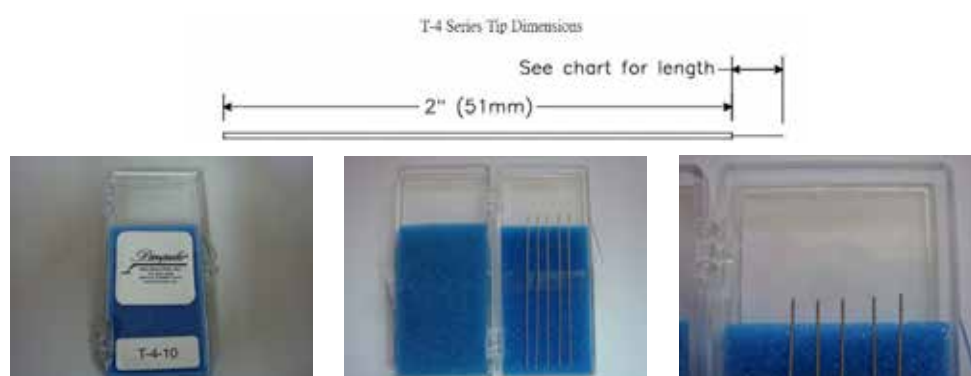
5-1. 硬探針 (Tungsten Tip)



ST Series Solid Tungsten Probe Tips

Part Number	Solid Tungsten Shaft Diameter	Point Diameter (in microns)
ST-20-0.5	0.020" (0.51mm)	< 1.0 micron
ST-20-1.0	0.020" (0.51mm)	< 2.0 micron
ST-20-2.0	0.020" (0.51mm)	< 5.0 microns
ST-20-5.0	0.020" (0.51mm)	< 10.0 microns
ST-20-10.0	0.020" (0.51mm)	< 20.0 microns

5-2. 軟探針 (Tungsten Tip)



T-4 Series Tungsten Probe Tips

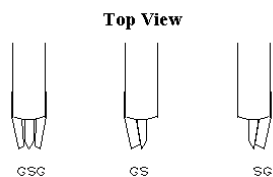
Part Number	Tungsten Probing Wire Shaft Diameter	Point Diameter (in microns)	Tip Length
T-4-5	5 micron	< 0.2 micron	0.13" (3.3mm)
T-4-10	10 micron	< 0.2 micron	0.13" (3.3mm)
T-4-22	22 micron	< 2.0 micron	0.20" (5.1mm)
T-4-35	35 micron	< 4.0 microns	0.20" (5.1mm)
T-4-60	60 micron	< 6.0 microns	0.20" (5.1mm)
T-4-125	125 micron	< 10.0 microns	0.20" (5.1mm)

5-3.PGP DC Tip

- Pitch 客製化
- 排針數量客製化
- Adapter 客製化



6. GGB RF Probes 高頻探針 (40GHz ~ 500GHz)



6-1.High Performance Microwave Probes Model 40A

Features:

- Durable RF probe, Pitch from 50 to 2540 micron
- DC to 40 GHz Insertion loss less than 0.8 db
- Variety of footprints, Patented coaxial design
- Individually spring loaded contacts, BeCu, Tungsten or Nickel tips available
- Return loss greater than 18 db, Measurement repeatability better than -80db
- Available in thirteen styles, Custom configurations available, K connector (2.9mm)

Model 40A		
Model 40A style (Mounting Style)	Model Information(part numbering convention):	
<ul style="list-style-type: none"> ■ P style ■ DP style ■ EDP style ■ LP style ■ C style ■ T style ■ GR style ■ VP style ■ Q style ■ F style ■ S style ■ DS style ■ RVP style 	<p>Model 40A - Configuration - Pitch - Mounting style</p> <p>Configuration: Specify GSG GS SG for tip placement where S is the signal tip and G is a ground tip. Use the following diagram to determine the appropriate configuration.</p> <p>Pitch: Specify ground (G) to signal (S) tip spacing in Microns from 50 to 1250 microns. For standard GSG probes, the two spacings are equal. Contact the factory for spacings larger than 1250 microns or unusual tip placement and spacings.</p> <p>Mounting style: Choose from thirteen adapter styles. Specify T, C, GR, P, DP, EDP, LP, Q, F, S, DS, VP, or RVP.</p>	

6-2.High Performance Microwave Probes Model 50A

Features:

- Durable RF probe, Pitch from 50 to 1250 microns
- DC to 50 GHz Insertion loss less than 1.0 db
- Variety of footprints, Patented coaxial design
- Individually spring loaded contacts, BeCu or Tungsten tips available
- Return loss greater than 18 db, Measurement repeatability better than -80db
- Available in thirteen styles, Custom configurations available, 2.4mm connector

Model 50A		
Model 50A style (Mounting Style)	Model Information(part numbering convention):	
<ul style="list-style-type: none"> ■ P style ■ DP style ■ EDP style ■ LP style ■ C style ■ T style ■ GR style ■ VP style ■ Q style ■ F style ■ S style ■ DS style ■ RVP style 	<p>Model 50A - Configuration - Pitch - Mounting style</p> <p>Configuration: Specify GSG GS SG for tip placement where S is the signal tip and G is a ground tip. Use the following diagram to determine the appropriate configuration.</p> <p>Pitch: Specify ground (G) to signal (S) tip spacing in Microns from 50 to 1250 microns. For standard GSG probes, the two spacings are equal. Contact the factory for spacings larger than 1250 microns or unusual tip placement and spacings.</p> <p>Mounting style: Choose from thirteen adapter styles. Specify T, C, GR, P, DP, EDP, LP, Q, F, S, DS, VP, or RVP</p>	

6-3.High Performance Microwave Probes Model 67A

Features:

- Durable RF probe, Pitch from 50 to 1250 microns
- DC to 67 GHz Insertion loss less than 1.1 db
- Variety of footprints, Patented coaxial design
- Individually spring loaded contacts, BeCu or Tungsten tips available, Coplanar probe tips
- Return loss greater than 14 db, Measurement repeatability better than -80db
- Available in thirteen styles, Custom configurations available

Model 67A		
Model 67A style (Mounting Style)	Model Information(part numbering convention):	
<ul style="list-style-type: none"> ■ P style ■ DP style ■ EDP style ■ LP style ■ C style ■ T style ■ GR style ■ VP style ■ Q style ■ F style ■ S style ■ DS style ■ RVP style 	<p>Model 67A - Configuration - Pitch - Mounting style</p> <p>Configuration: Specify GSG GS SG for tip placement where S is the signal tip and G is a ground tip. Use the following diagram to determine the appropriate configuration.</p> <p>Pitch: Specify ground (G) to signal (S) tip spacing in Microns from 50 to 1250 microns. For standard GSG probes, the two spacings are equal. Contact the factory for spacings larger than 1250 microns or unusual tip placement and spacings.</p> <p>Mounting style: Choose from thirteen adapter styles. Specify T, C, GR, P, DP, EDP, LP, Q, F, S, DS, VP, or RVP</p>	

6-4.High Performance Microwave Probes Model 110A

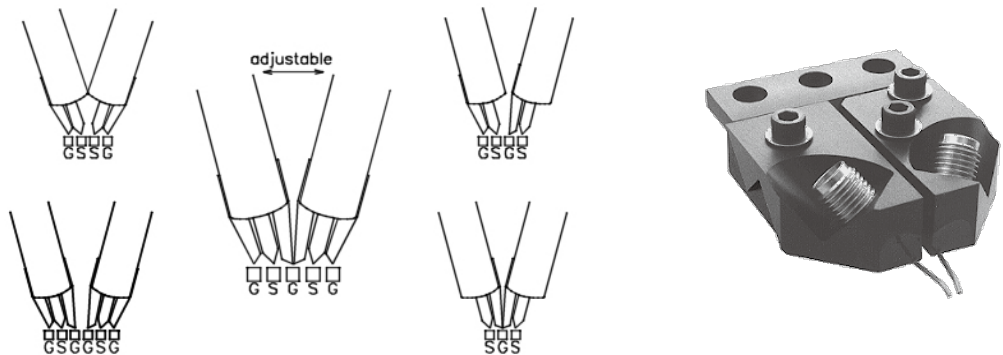
Features:

- Durable , Patented Coaxial Design , DC to 110 GHz
- Individually Spring-loaded Contacts
- Insertion loss 1.5 db (110H) , Return loss 15 db (110H)
- Utilizes the 1.0 mm female connector

6-5.High Performance Microwave Probes Dual Microwave Probe

Features:




- Two probes on one positioner
- Same performance as individual Model 40A, 50A, 67A, and 110H probes
- Ground to signal spacing from 50 to 2540 microns
- Patented coaxial design
- Signal to signal spacing is user adjustable
- Differential calibration substrates available for two, three and four port calibrations



Dual Microwave Probe	
Dual Microwave Probe Style	Model Information(part numbering convention):
<ul style="list-style-type: none">■ GSSG■ GSGS■ GSGSG■ GSGGS■ SGS	<p>To order a Dual Probe, use our regular Model 40A literature as a guide to specify each probe individually.</p> <p>Then, the orientation of the two probes is specified from left to right looking from the top with the probe tips facing towards you. For example, a 40A-GSG-150 /40A-SG-150-D-300 is a dual probe. The left probe has a GSG footprint with 150 microns between the grounds and signal. The right probe has a SG footprint with 150 microns between the ground and signal. The spacing between the signal of the left probe and the signal of the right probe is 300 microns.</p> <p>Microwave probes with frequencies up to 110GHz are available.</p> <p>Choose from either the Model 40A (2.9mm connector), Model 50A (2.4mm connector) Model 67A (1.85mm connector) or the Model 110H (1.0mm connector).</p>

7. GGB Picoprobe 主動式探針 & Arm(12C-18C-19C-28C-29C-34A-35)


7-1.Picoprobe Model 12C Replacement Tips & Picoprobe Arm

12C Picoprobe Arm Specifications		Picoprobe Model 12C Replacement Tips			
Input Capacitance	0.1pf	Part Number	Tungsten Wire Shaft Diameter	Point Radius	
Input Resistance	1.0 megohm	12C-1-5	5 micron	<0.1 micron	
Rise/Fall Time	0.8ns	12C-1-10	10 micron	<0.1 micron	
Bandwidth	dc to 500 MHz	12C-1-22	22 micron	<1.0 micron	
Linearity	0.5%	12C-1-35	35 micron	<2.0 micron	
Voltage Range	-10 to +20V*	12C-1-60	60 micron	<3.0 micron	
Gain Accuracy	±3%	12C-1-125	125 micron	<5.0 micron	
Signal Attenuation	(High Input impedance oscilloscope: 10 to 1) (50 ohm input: 20 to 1)	12C-2-5	5 micron	<0.1 micron	
		12C-2-10	10 micron	<0.1 micron	
		12C-2-22	22 micron	<1.0 micron	
		12C-2-35	35 micron	<2.0 micron	
		12C-2-60	60 micron	<3.0 micron	
		12C-2-125	125 micron	<5.0 micron	
		12C-4-5	5 micron	<0.1 micron	
		12C-4-10	10 micron	<0.1 micron	
		12C-4-22	22 micron	<1.0 micron	
		12C-4-35	35 micron	<2.0 micron	
		12C-4-60	60 micron	<3.0 micron	
		12C-4-125	125 micron	<5.0 micron	


7-2.Picoprobe Model 18C 19C Replacement Tips & Picoprobe Arm

Specifications	Model 18C Arm	Model 19C Arm	Model 18C and Model 19C Replacement Tips			
Input Capacitance*	0.02pF	0.02pF	Standard Part Number	Higher Voltage Part Number	Tungsten Wire Shaft Diameter	Point Radius
Input Leakage	10 femtoamps	10 femtoamps	18C-1-5	18C-1-5-HV	5 micron	<0.1 micron
Rise/Fall Time	1.2ns	1.2ns	18C-1-10	18C-1-10-HV	10 micron	<0.1 micron
Frequency Response	dc to 350 MHz	dc to 350 MHz	18C-1-20	18C-1-20-HV	20 micron	<1.0 micron
Operating Range	0 to + 10V range **	-7 to + 3V***	18C-1-50	18C-1-50-HV	50 micron	<3.0 micron
Linearity	0.2% 5V range / 2.0% 10V range	0.2% ± 3V range / 2.0% -7 to +3V range				
Gain Accuracy	±5%	±5%	18C-2-5	18C-2-5-HV	5 micron	<0.1 micron
Signal Attenuation	(High input impedance oscilloscope) 10 to 1 (50 ohm input) 20 to 1	(High input impedance oscilloscope) 10 to 1 (50ohm input) 20 to 1	18C-2-10	18C-2-10-HV	10 micron	<0.1 micron
			18C-2-20	18C-2-20-HV	20 micron	<1.0 micron
			18C-2-50	18C-2-50-HV	50 micron	<3.0 micron
*For 3ns or longer rise and fall signals. Speed limitations of the capacitance cancelling circuitry results in approximately 0.06pF input capacitance for 1ns or shorter rise or fall inputs.						
** For 0V to +15V please see the higher voltage part number in the table below.			18C-4-5	18C-4-5-HV	5 micron	<0.1 micron
***For -7V to +8V please use the higher voltage part number in the table below.			18C-4-10	18C-4-10-HV	10 micron	<0.1 micron
Requires the use of a Picoprobe Power Supply. Please specify 110V or 220V when ordering.			18C-4-20	18C-4-20-HV	20 micron	<1.0 micron
			18C-4-50	18C-4-50-HV	50 micron	<3.0 micron

7-3. Picoprobe Model 28C 29C Replacement Tips & Picoprobe Arm

Specifications	Model 28 Arm	Model 29 Arm	Picoprobe® Model 28 and 29 Replacement Tips			
Input Capacitance	0.04pF	0.04pF	Part Number	Tungsten Probing Wire Shaft Diameter	Point Radius	
Input Leakage	10 femtoamps	10 femtoamps	28-5-5	5 micron	<0.1 micron	
Rise/Fall Time	350ps (+5V pulse or less)	350ps (±2.5V pulse or less)	28-5-10	10 micron	<0.1 micron	
Frequency Response	dc to 1GHz (-3dB)	dc to 1Ghz (-3dB)	28-5-20	20 micron	<1.0 micron	
Operating Range	-3 to +10V	-7 to +6V	28-5-50	50 micron	<3.0 micron	
Linearity	0.5%(-1 to +4V range) / 2.0%(+3 to +10V range)	0.5%(-2 to +2V range) / 2.0%(-7 to +6V range)	Picoprobe® Model 29 uses Picoprobe® Model 28 probe tips.			
Gain Accuracy	±3%	±3%				
Signal Attenuation	20 to 1 (50ohm input)	20 to 1 (50ohm input)				

7-4. Picoprobe Model 34A 35 Replacement Tips & Picoprobe Arm

Model 34A Arm Specifications		Picoprobe® Model 28 and 29 Replacement Tips			
Input Capacitance	0.1pf	<div><div>Part Number</div><div>Tungsten Probing Wire Shaft Diameter</div><div>Point Radius</div></div> <div></div>	Part Number	Tungsten Probing Wire Shaft Diameter	Point Radius
Input Resistance	10.0 megohm		34A-4-5	5 micron	<0.1 micron
Rise/fall time	120 ps (5V pulse)		34A-4-10	10 micron	<0.1 micron
Frequency Response	DC to 3 GHz (-3dB)		34A-4-22	22 micron	<1.0 micron
Operating Range	-7V to +10V		34A-4-35	35 micron	<2.0 micron
Linearity	0.50%		34A-4-60	60 micron	<3.0 micron
Gain Accuracy	±3%		34A-4-125	125 micron	<5.0 micron
Signal Attenuation	20:1				

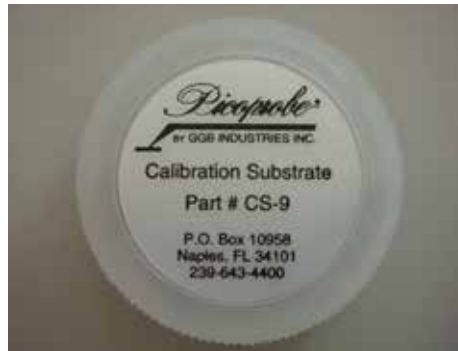
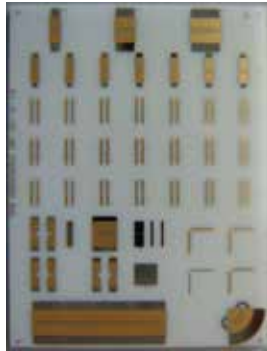
The PICOPROBE MODEL 34A was engineered to meet the stringent demands of advanced high frequency circuit designers. This high impedance probe combines full DC capability, rise/fall times of 120 ps, and a nominal loading input impedance of 10 megohm shunted by 0.1 pf. Signal attenuation is 20:1 with a 50 ohm oscilloscope input. Like our other active probes, the Model 34A achieves its bandwidth using just one probe point, which greatly simplifies internal node testing without sacrificing performance. An assortment of user replaceable probe tips are available for a variety of probing needs. The Model 34A is powered by our standard Picoprobe® power supply.

Model 35 Arm Specifications		Picoprobe Model 35 Tips		
Input Capacitance	0.05pF	Part Number	Tungsten Probing Wire Shaft Diameter	Point Radius
Input Resistance	1.25 megohms	35-1-5	5 micron	<0.1 micron
Rise/Fall Time	14 ps (3V pulse or less)	35-1-10	10 micron	<0.1 micron
Frequency Response	dc to 26GHz	35-1-22	22 micron	<1.0 micron
Operating Range	-6 to +6V	35-1-35	35 micron	<2.0 micron
Linearity	2% (+/-3V)			
Signal Attenuation	10 to 1 (50ohm input)			

The Picoprobe Model 35 has been engineered to meet the stringent demands of advanced high frequency circuit designers. This probe combines full DC capability, rise/fall times of 14 ps, and a nominal loading input impedance of 1.25 megohms shunted by 0.05 pf. Signal attenuation is 10:1 with a 50 ohm oscilloscope input. Like our other active probes, the Model 35 achieves its bandwidth using just one probe point, which greatly simplifies internal node testing without sacrificing performance. An assortment of user replaceable probe tips are available for a variety of probing needs. The Model 35 is powered by our new PS-3 power supply.

8. Calibration Substrate(校正片)

8-1. Calibration Substrates Specification:



- Supports Precise SOLT, LRL/TRL, and LRM/TRM calibrations
- Includes CalKit software for easy loading to Network Analyzer
- Wide pitch range from 30 to 2,540 microns
- Suitable for all Picoprobes® from DC to 220 GHz
- Available for GS, SG, GSG Footprints
- Convenient alignment structures
- Individually tested and trimmed to exacting standards

Calibration Substrate Selection Guide

Calibration Substrate	Pad Size (microns)	Calibration Types Supported	Footprint	Pitch Range Recommended (microns)	Pitch Range Acceptable (microns)
CS-5	50 X 50	SOLT, LRL, LRM	GSG	75 - 250	75 - 250
CS-9	100 X 100	SOLT, LRL, LRM	GSG	250 - 600	150 - 600
CS-10	150 X 150	SOLT, LRM	GSG	600 - 1250	225 - 1250
CS-18	300 X 300	SOLT, LRM	GSG	1250 - 2540	500 - 2540
CS-8	50 X 50 100 X 100 150 X 150	SOLT, LRM	GS, SG	50 - 200	50 - 300
CS-14	100 X 100	SOLT, LRM	GS, SG	200 - 400	150 - 600
CS-11	150 X 150	SOLT, LRM	GS, SG	400 - 1250	175 - 1250
CS-17	300 X 300	SOLT, LRM	GS, SG	750 - 2540	450 - 2540
Special Calibration Substrate Designed For Use Above 110 GHz					
Calibration Substrate	Pad Size (microns)	Calibration Types Supported	Footprint	Pitch Range Recommended (microns)	Pitch Range Acceptable (microns)
CS-15	25 X 25	SOLT, LRL, LRM	GSG	40 - 150 (SOLT) 30 - 150 (LRL)	40 - 150
* SOLT = Short-Open-Load-Through LRL = Line-Reflect-Line (Which is equivalent to TRL = Through-Reflect-Line) LRM = Line-Reflect-Match (Which is equivalent to TRM = Through-Reflect-Match)					

8-2.Differential Calibration Substrates:

Calibration Substrate Selection Guide					
Calibration Substrate	Pad Size (microns)	Calibration Types Supported	Footprint	Pitch Range Recommended (microns)	Acceptable Pitch
CS-2-50	25 X 25	SOLT, LRL,LRM	GSGSG	50	45-55
CS-2-75	25 X 25	SOLT, LRL,LRM	GSGSG	75	70-80
CS-2-100	50 X 50	SOLT, LRL,LRM	GSGSG	100	90 - 110
CS-2-125	50 X 50	SOLT, LRL,LRM	GSGSG	125	115 - 135
CS-2-150	50 X 50	SOLT, LRL,LRM	GSGSG	150	140 -160
CS-2-200	50 X 50	SOLT, LRL,LRM	GSGSG	200	190 - 210
CS-2-250	50 X 50	SOLT, LRL,LRM	GSGSG	250	240 -260
CS-2-500	100 X 100	SOLT, LRL,LRM	GSGSG	500	490 - 510
CS-2-1000	150 X 150	SOLT, LRL,LRM	GSGSG	1000	990 - 1010
CS-2-1250	150 X 150	SOLT, LRL,LRM	GSGSG	1250	1225 - 1275

FIGURE 2

Calibration Substrate	Pad Size (microns)	Calibration Types Supported	Footprint	Pitch Range Recommended (microns)	Acceptable Pitch
CS-3-50	25 X 25	SOLT, LRM	GSSG	50	45-60
CS-3-75	25 X 25	SOLT, LRM	GSSG	75	65-85
CS-3-100	50 X 50	SOLT, LRM	GSSG	100	85 - 115
CS-3-125	50 X 50	SOLT, LRM	GSSG	125	110 - 140
CS-3-150	50 X 50	SOLT, LRM	GSSG	150	135 -165
CS-3-175	50 X 50	SOLT, LRM	GSSG	175	160 - 190
CS-3-200	50 X 50	SOLT, LRM	GSSG	200	185 - 215
CS-3-250	100X 100	SOLT, LRM	GSSG	250	200 - 300
CS-3-350	100 X 100	SOLT, LRM	GSSG	350	300 - 400
CS-3-450	100 X 100	SOLT, LRM	GSSG	450	400 - 500
CS-3-500	150 X 150	SOLT, LRM	GSSG	500	425 - 525
CS-3-600	100 X 100	SOLT, LRM	GSSG	600	550 - 625
CS-3-800	300 X 300	SOLT, LRM	GSSG	800	600 - 1000
CS-3-1000	300 X 300	SOLT, LRM	GSSG	1000	800 - 1075
CS-3-1250	300 X 300	SOLT, LRM	GSSG	1250	1050 - 1325
CS-4-150	50 X 50	SOLT, LRM	SGS	150	140 - 160
CS-4-250	100 X 100	SOLT, LRM	SGS	250	225 - 275

9. Triaxial Adapter 轉接頭

Specification:

- Impedance:50 Ohm
- Max Frequency:500 MHz
- Contact Plating:Gold(金)

產品編號 :EBJ73

Triaxial(母) to Triaxial(母) 可夾板 Adapter



產品編號 :EPL75

Triaxial(公) to Coaxial(母) Adapter



產品編號 :EBJ74

Triaxial(母) to Coaxial(母) Adapter



產品編號 :EPL20

Triaxial(母) to Coaxial(公) Adapter



產品編號 :EBN73

Triaxial(1 公) to Triaxial(2 母) Adapter



產品編號 :EBJ72

Triaxial(母) to 可焊接 Adapter



產品編號 :ECBBJR159

Triaxial(母) to Triaxial 可銲接印刷電路板 Adapter



產品編號 :ECBBJR74

Triaxial(母) to Triaxial 可銲接印刷電路板 Adapter



產品編號 :ECBBJ79

Triaxial(母) to 可焊接 PCB Adapter



產品編號 :EADRMF70

Triaxial(公) to Triaxial(母) Adapter



產品編號 :EBN83

Triaxial(TNC 母) to Triaxial(2 母) Adapter



產品編號 :EPL750

Triaxial(公) 連接 Cable Adapter



10. Coaxial Adapter 轉接頭

Specification:

■ Impedance: 50 Ohm ; Max Frequency - 4 GHz

產品編號 : SM3408

BNC(公) to BNC(母)-Adapter



產品編號 : SM3411

BNC(公) to BNC(公)-Adapter



產品編號 : SM3452

BNC(公) to BNC(母)-L型 Adapter



產品編號 : SM3448

BNC(公) to BNC(2母)-T型 Adapter



產品編號 : SM3655

BNC(公) to BNC(3母)-Adapter



產品編號 : SM3651

BNC(公) to BNC(2公)-Adapter



產品編號 : SM4716

BNC(公) to SMA(公)-Adapter



產品編號 : SM4726

BNC(公) to SMA(母)-Adapter



產品編號 : SM3652

BNC(公) to Banana(公)-Adapter



產品編號 : SM3515

BNC(公) to N(母)-Adapter



產品編號 : SM3954

BNC(公) to RCA(母)-Adapter



產品編號 : SM3659

BNC(公) to Banana(2公)-Adapter



產品編號 :SM3520
BNC(公) to N(公)-Adapter



產品編號 :SM3415
BNC(母) to BNC(母)-Adapter



產品編號 :SM3416
BNC(母) to BNC(母)-可夾板 Adapter



產品編號 :SM6140
BNC(母) to RCA(公)-Adapter



產品編號 :SM4721
BNC(母) to SMA(公)-Adapter



產品編號 :SM4709
BNC(母) to SMA(母)-Adapter



產品編號 :SM3510
BNC(母) to N(公)-Adapter



產品編號 :SM3418
BNC(母) to BNC(2母)-T型 Adapter



產品編號 :SM3653)
BNC(母) to BNC(2公)-Adapter



產品編號 :SM3656)
BNC(母) to Banana(公)-Adapter



產品編號 :SM3657
BNC(母) to Banana(2公)-Adapter



產品編號 :SM3658)
BNC(母) to Banana(2母)-Adapter

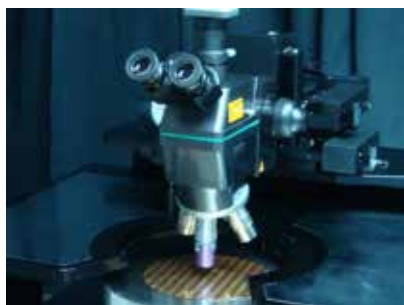


11. Microscope 顯微鏡 (Mitutoyo-Motic- 立體顯微鏡)

11-1.Mitutoyo 金像顯微鏡

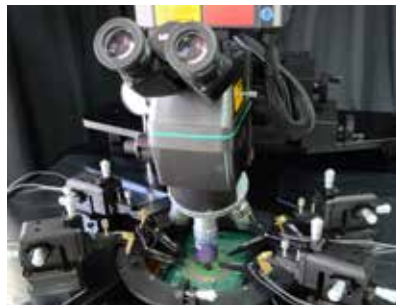
Mitutoyo FS-70Z 高倍顯微鏡

- Trinocular tube image:Erect Image
- Pupil distance:Adjustment Range 51-76mm
- Main unit:1x-2x Zoom
- Loding Weight:13.5kg
- Mass:6.2 kg



Mitutoyo FS-70L 高倍顯微鏡

- Trinocular tube image:Erect Image
- Pupil distance:Adjustment Range 51-76mm
- Main unit:1x
- Applicable YAG laser:1064/532/355 nm
- Loding Weight:13.5kg
- Mass:6.8 kg



11-1-1.Mitutoyo 金像顯微鏡 Eyepiece

- Mitutoyo 目鏡 eyepiece 10X
- Mitutoyo 目鏡 eyepiece 15X
- Mitutoyo 目鏡 eyepiece 20X



11-1-2.Mitutoyo 物鏡

Mitutoyo M plan Apo 物鏡

Best Order No	Magnification	N.A.	Working Distance(mm)	f(mm)	R(μm)	DOF(μm)	Mass(g)
Best-800	1x	0.025	11	200	11	440	300
Best-801	2x	0.055	34	100	5	91	220
Best-802-2	5x	0.14	34	40	2	14	230
Best-803-2	10x	0.28	33.5	20	1	3.5	230
Best-804-2	20x	0.42	20	10	0.7	1.6	370
Best-805-2	50x	0.55	13	4	0.5	0.9	290
Best-806-3	100x	0.7	6	2	0.4	0.6	320

Mitutoyo M plan Apo NIR 物鏡

Best Order No	Magnification	N.A.	Working Distance(mm)	f(mm)	R(μm)	DOF(μm)	Mass(g)
Best-822-4	5x	0.14	37.5	40	2	14	220
Best-823-5	10x	0.26	30.5	20	1.1	4.1	250
Best-824-4	20x	0.4	20	10	0.7	1.7	300
Best-825-5	50x	0.42	17	4	0.7	1.6	315
Best-826-5	100x	0.5	12	2	0.6	1.1	335

Mitutoyo M plan Apo NUV 物鏡

Best Order No	Magnification	N.A.	Working Distance(mm)	f(mm)	R(μm)	DOF(μm)	Mass(g)
Best-817-4	20x	0.4	17	10	0.7	1.7	340
Best-818-4	50x	0.42	15	4	0.7	1.6	350
Best-819-4	100x	0.5	11	2	0.6	1.1	380

Mitutoyo M plan UV 物鏡

Best Order No	Magnification	N.A.	Working Distance(mm)	f(mm)	R(μm)	DOF(μm)	Mass(g)
Best-837-5	20x	0.36	15	10	0.8	2.1	330
Best-838-5	50x	0.4	12	4	0.7	1.7	400
Best-839-5	80x	0.55	10	2.5	0.5	0.9	380

11-1-3.Mitutoyo Polarizer 偏光鏡 11-4.Motic 金像顯微鏡



PSM-1000

- 目鏡 :WF10x/24
- 視場直徑 ϕ 24mm 獨立校正色差
- Pupil distance:Adjustment Range 55-75mm
- 粗微調焦機構:行程 52mm
- 最大承載重量 :20.4 kg



11-5. 立體顯微鏡

Best-M001 Stereo Zoom Microscope

- Eyepiece:20x or 30X
- 1~6.5X Zoom
- Total magnification: 30X ~ 195X
- Microscope Z 軸粗微調機構
- 高亮度 LED 無段式調整
- 搭配 CCD system (Upgrade)



11-6. 可調 LED 環型燈源

產品編號 :LED-69T

- 白光高亮度 LED 光源
- 無段調整亮度
- 搭配立體顯微鏡
- 工作距離 :60mm ~ 150mm
- 電壓 :DC 12V
- 尺寸 : 內徑 62mm 外徑 97mm



11-7.LightBox 光源機

產品編號 :AXEN-110

- 電 源 :110V/220V AC 60HZ ; 採分離式電源線
- 燈 源 : 鹵素燈泡 15V/150W
- Fuse: 250V/3A
- Dimension: 93mm(W) x 211mm(D) x 118mm(H)
- Weight:2.2Kg



11-8. 光纖線

- 長度客製化
- Adapter 客製化



11-9. 光源機杯燈



11-10. 磁性反轉底座 (小) 11-11. 磁性反轉底座 (大)



12. CCD 影像擷取系統 (Sony-Sentech-Watec)

Watec-221S	SONY CCD SSC-G813																
<p>Specification:</p> <ul style="list-style-type: none">Effective picture elements:380,000 (768 x 494) 像素訊號輸出：類比訊號 Analog，Image device:1/2-type水平解析度：480 TV lines，Size:64.5(L)x43.5(W)x44(H) mmPower requirements:DC + 12 V ±10 %，Mass:160 g 	<p>Specification:</p> <ul style="list-style-type: none">Effective picture elements:440,000 (752 x 582) 像素Power requirements:AC 24 V ±10 %，50 Hz or DC 12 V ±10 %Image device:1/2-type，Dimensions (φ x H):63x57x124 mmS/N ratio:More than 57 dB (AGC Off)，Mass:390 g 																
CCD-SENTECH STC-N63CJ	New Wave Laser System																
<p>Specification:</p> <ul style="list-style-type: none">Image device:1/3 interline transfer CCD解析度：768(H)x494(V)照度：0.19 Lux at F1.2，工作溫度：-10° ~ 45°CPower requirements:DC + 12 V ±10 %Mass:70 g，Size:36(W)x36(H)x36.5(D) mm 	<table><tr><td></td><td>Infrared(1064 nm)</td><td>Green(532 nm)</td><td>Ultraviolet(355 nm or 266 nm)</td></tr><tr><td>LCDMaterials</td><td>ITO, Chromium, Color Filter-red, green</td><td>ITO, Chromium, Color Filter-blue / green</td><td>Color,Filter-blue/green</td></tr><tr><td>Semiconductor Materials</td><td colspan="2">Silicon Dioxide, Nitride, Polyimide (big cuts), SOG, Poly-silicon</td><td>Nitride, Polyimide</td></tr><tr><td>Metals</td><td>Aluminum, Gold, Ti-Tungsten</td><td>Gold, Aluminum, Ti-Tungsten</td><td>Gold, Aluminum</td></tr></table>		Infrared(1064 nm)	Green(532 nm)	Ultraviolet(355 nm or 266 nm)	LCDMaterials	ITO, Chromium, Color Filter-red, green	ITO, Chromium, Color Filter-blue / green	Color,Filter-blue/green	Semiconductor Materials	Silicon Dioxide, Nitride, Polyimide (big cuts), SOG, Poly-silicon		Nitride, Polyimide	Metals	Aluminum, Gold, Ti-Tungsten	Gold, Aluminum, Ti-Tungsten	Gold, Aluminum
	Infrared(1064 nm)	Green(532 nm)	Ultraviolet(355 nm or 266 nm)														
LCDMaterials	ITO, Chromium, Color Filter-red, green	ITO, Chromium, Color Filter-blue / green	Color,Filter-blue/green														
Semiconductor Materials	Silicon Dioxide, Nitride, Polyimide (big cuts), SOG, Poly-silicon		Nitride, Polyimide														
Metals	Aluminum, Gold, Ti-Tungsten	Gold, Aluminum, Ti-Tungsten	Gold, Aluminum														

13. MEDO 超靜音真空幫浦

VP-0125 Vacuum Pump(產品編號 :VP-0125)	VP-0625 Vacuum Pump(產品編號 :VP-0625)
<p>Specification:</p> <ul style="list-style-type: none"> 真空度：-33.3 kPa (-250mmHg) 吐出空氣：7 Liter/min Power:AC100V, 50Hz, 15W, 0.35A Size: 90(L) x 58(W) x 80(H)mm / 0.7 Kg 	<p>Specification:</p> <ul style="list-style-type: none"> 真空度：-33.3 kPa (-250mmHg) 吐出空氣：40 Liter/min Power:AC110V, 50Hz, 60W, 1.4A Size: 175(L) x 118(W) x 138(H)mm / 3.0 Kg 

14. Shielding Box 黑箱 & 防震桌 & Hot Chuck

Shielding Box 防干擾黑箱

- Shielding Box for 4" 6" 8" 12" Probe Station
- 8*BNC Feedthru (Triaxial Feedthru Available)
- Size: 1350(H) x 1320(W) x 1020(L) mm
- 客制化尺寸



防震桌 (主動式防震氣囊)

- Dimensions 桌面 1220mmx920mmx50mm(長 x 寬 x 高)
- Vertical Natural Frequency: 1.9 Hz
- Maximum Load: 80 psi
- 承載重量 ≤ 363 kg
- Isolation Efficiency @ 10 Hz 97%



防震桌 (被動式防震氣囊)

- Dimensions 桌面 1220mmx920mmx50mm(長 x 寬 x 高)
- 溫度使用範圍: -10°C ~ 60°C ; 防振頻率: 自然頻率 3Hz~5Hz
- 設備效率可達 97% 以上
- 總承載重量 ≤ 400kg
- 氣門嘴: CNS TV-10 標準螺紋



LiquidCrystal(液晶)

- 29°C



JUN Air 超靜音空氣壓縮機

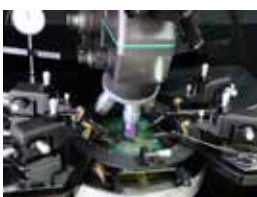
產品編號 : Best-3-4

- 電壓 : 110V/220V
- 供氣能力 1/min./CFM: 17/0.60
- 最大壓力 bar/PSI: 8/120
- 電流 : 0.9 A
- 重量 Kg: 18, 噪音 dB(A)/1m: 35
- 外觀體積 LxWxH(mm): 384x333x342
- 頻率 Hz: 50
- 儲氣容量 : 4 liter



Probe Card holder 探針卡治具

- 4.5 PCB probe card holder



Hot Chuck

- Chuck Size: 4" 6" 8" 12"
- Chuck Planarization: +/- 10um
- Temp. Range: Ambient ~ 600° C
- Temperature Accuracy: +/- 0.5° C
- Power to Heat: AC/DC
- Power max 1800W 50/60HZ
- 客製化 Hot Chuck
- 低溫 Chuck



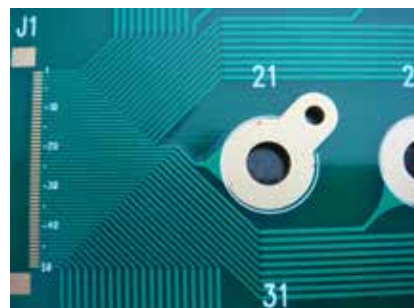
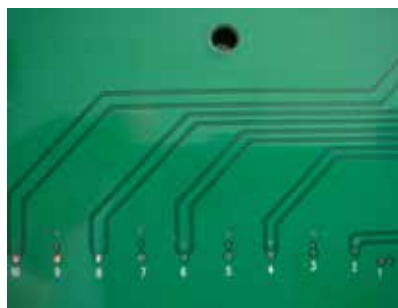
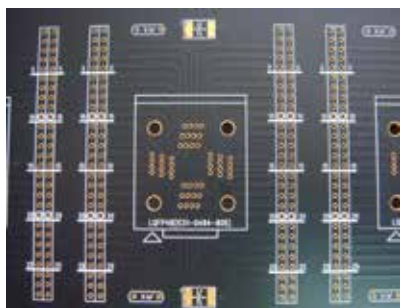
15. PCB Layout PCB Manufacturing PCB Assembly Service

Design Experience

- IC test board
- Reliability test board
- Motherboard
- DSC
- Video
- Wireless
- GPS
- IA products

PCB 製程能力

項目	標準產品技術層次	中、高階產品層次
Layer	2-12 Layer	14-18 Layers
基板板 / PP Laminate / PP		
最大板厚	196.9 mil (5.00mm)	236.2 mil (6.00mm)
最小板厚 (四層板)	16 mil (0.4mm)	15 mil (0.38mm)
最小板厚 (雙面板)	12 mil (0.3mm)	9.8 mil (0.25mm)
最小內層板厚	4 mil (0.10mm) 不含銅	2 mil (0.05mm) 不含銅
最大工作尺寸	18" X 24" (457.2 X 609.6 mm)	24" X 26" (533.4 X 609.6 mm)
最小 PP 厚度	2.0 mil (0.05mm)	2.3mil (0.051mm)
銅層 Copper :		
最大內層銅厚	2.0 oz	3.0 oz
最小內層銅厚	0.5 oz	0.3 oz
最大外層銅厚	2.0 oz	5.0 oz
最小外層銅厚	0.5 oz	0.3 oz
通孔線路疊構 Through hole trace stack up :		
產品疊構	一般硬質電路板・軟板	盲 / 埋孔
最小鑽孔孔徑	10 mil (0.25mm)	8 mil (0.2mm)
最小雷射孔徑	4 mil (0.100mm)	3 mil (0.076mm)
最大縱橫比		
線路配置 Trace :		
外層線路之線寬 / 距	4/4 mil	3/3 mil
內層線路之線寬 / 距	4/4 mil	3/3 mil
最小 SMT 焊墊間距	12 mil (0.3 mm)	8 mil (0.2 mm)
最小 BGA 焊墊間距	6 mil (0.15 mm)	4 mil (0.1 mm)
防焊及表面處理 Solder mask and surface treatment :		
最小防焊印刷寬度	4 mil (0.102 mm)	3 mil (0.075 mm)
防焊對位誤差控制	± 3 mil	± 2 mil
表面處理方式	Entek, ENIG, HASL	Immersion Silver, Tin



16. 各式烤箱銷售 (Oven) Assembly Service

Oven Specification:

- 採微電腦電子數位操控方式，穩定可靠。
- 箱體絕熱 packing 以 silicone 成型，耐高溫，永不老化。
- 可附加觀測視窗，使用方便，得心應手。
- 加熱採強制循環送風方式，溫度上昇快速。
- PID 控制系統，雙重超溫保護，安全可靠。
- 溫度設定簡易，操作方便。
- 附活動盤，可任意調整高低。
- 內部材質：內部採用 SUS 不銹鋼
- 外部材質：外部採用 SECC 鋼板、精粉體烤漆處理。
- 送風系統：全新耐高溫長軸馬達配合強力型多翼式風輪。
- 循環系統：強制水平送風循環，特殊風路設計，加熱溫度均勻。
- 安全裝置：獨立超溫保護器；自我診斷功能、超負載自動斷電系統。
- 可依客戶需求訂製任何尺寸。

型 號	BRHDM-1202H	BRHDM-1002L	RHDM-1402	RHDM-1602	RHDM-1802
溫度範圍	室溫 +20°C ~260°C				
控制方式	PID 微電腦控制，PV/SV 同時顯示按鍵設定				
加熱方式	PID+S.S.R				
精確度	±1.0°C	±1.0°C	±1.0°C	±1.0°C	±1.0°C
均勻度	±2%	±2%	±2%	±2%	±2%
電壓	220V	220V	220V/380V	220V/380V	220V/380V
容 積	540L	540L	1008L	1792L	2520L
電流	6KW	6KW	11KW	14KW	19KW
柵板	5	4	12	14	14
內箱尺寸 W*H*D(cm)	90*120*50	120*90*50	140*120*60	160*140*80	180*140*100
外箱尺寸 W*H*D(cm)	109*180*67	140*150*67	175*192*78	200*215*98	220*215*118
備註	單門	雙門	雙門	雙門	雙門



17. 各式助焊劑油汙 - 冷卻劑銷售 (MicroCare 台灣總代理)



Discover Perfectly Clean

When it comes to precision cleaning electronics during manufacturing, rework or repair, Microcare is the industry leader. The Microcare brand of quality products, innovative chemistries and instant customer service has earned the trust of companies around the globe.

Microcare products:

- Reduce manufacturing costs
- Improve production efficiencies
- Maximize throughput
- Minimize defects and waste
- Enhance product stewardship and safety
- Improve quality and reliability



Application:

- Wafer level CSP flux residue remove
- PCB level flux residue remove
- Lead frame package flux residue remove
- Remove flux or oil after HAST process/test
- HAST board clean

For Perfectly Clean Fiber Optic Networks

The Sticklers cleaning products are the only fiber optic cleaners on the market today that have been engineered as a total system, with the different pieces all working together and enhancing each other's performance, to resolve the complex problems of cleaning fiber optics.

If You Are Cleaning Inside Fiber Optic Ports...

...then you know this is one of the world's toughest cleaning environments. Sticklers can do more, faster. You need...

CleanStixx™

The Sticklers CleanStixx™ are patented cleaning "swabs" that fit inside alignment sleeves on fiber optic connectors and outperform all others.



If You're Cleaning Jumpers or Before Splicing...

...then you're probably using IPA alcohol and cheap paper wipes. Sticklers can do a better job at lower cost. You need...

CleanWipes™

There are four sizes of Sticklers CleanWipes™ for the different fiber optic cleaning applications. Like any wipe, these will work best when used with the Sticklers Cleaning Fluid.



Cleaning Fluid

The Sticklers Cleaning Fluid is a fast-drying, nonflammable liquid that delivers faster, better and more consistent cleaning than other choices.



Cleaning Fluid

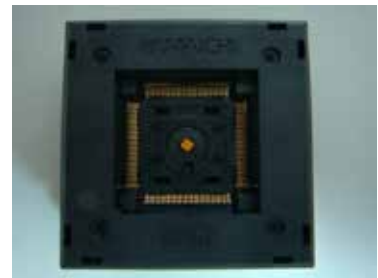
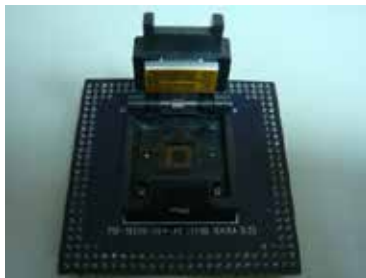
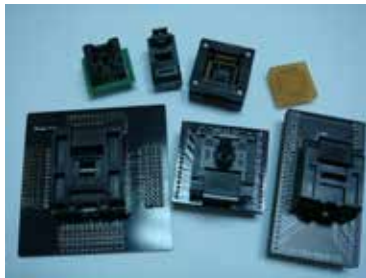
The Sticklers Cleaning Fluid is a fast-drying liquid that replaces the IPA alcohol often used on fiber.



18. 各式 socket / socket adaptor 銷售

Test&Burn-IN Socket Packge:

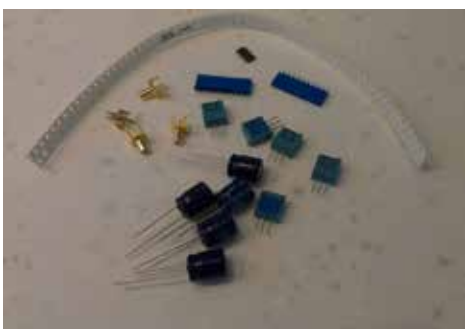
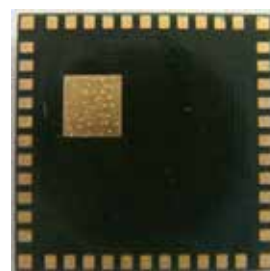
- DIP
- SOJ
- SOP
- TSOP
- TSSOP
- SSOP
- PLCC
- QFP
- TQFP
- PQFP
- LQFP
- QFN



19. 各式電子零件售銷服務

提供多樣，少量，各式主，被動電子零件，對於電子材料取得既是輕鬆又方便快捷

- 光電子產品 :LED 照明 - COB、引擎、模組
- 感測器、傳感器 : 光學感測器 - 光電二極體
- 感測器、傳感器 : PMIC - MOSFET、電橋驅動器 - 內部開關、邏輯 - 多諧振盪器
- 繼電器 : I/O 繼電器模組 - 輸入
- 電容 : Mica 和 PTFE 電容, 陶瓷電容
- 電感、線圈、扼流圈 : 可調電感
- 電阻 : 晶片電阻器 - 表面黏著式
- 整流器
- 排針





新竹總公司

TEL:03-5880088 Fax:03-5887878

30543 新竹縣新埔鎮文山路犁頭山段777巷3號

E-Mail: charles@bestt.com.tw

Website: <http://www.bestt.com.tw>